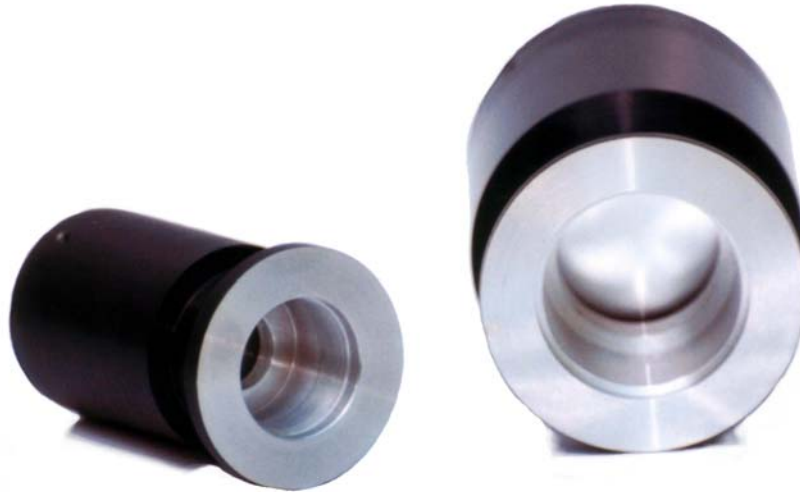




PEM 10 VUV

PEM 20 VUV

*VUV – Energy measurement heads with high sensitivity
Specially designed for 157 nm*



	PEM 10 VUV	PEM 20 VUV
Aperture	10 mm	20 mm
Sensitivity	30 .. 50 V/J at 1 MOhm	15 .. 25 V/J at 1 MOhm
Repetition Rate	150 Hz at 1 MOhm	150 Hz at 1 MOhm
max. average power	5 W	5 W
accuracy	±5 %	±5 %
max. energy density ($\tau=10\text{ns}$)	50 mJ/cm ²	50 mJ/cm ²
Max. peak power density	5 MW/cm ²	5 MW/cm ²
Detection threshold	100 μJ	200 μJ
Window	MgF ₂	MgF ₂
Connector	SMA	SMA
Vacuum connector	KF 16 ND	KF 25 ND
Dimension (incl. SMA- and vacuum connectors)	diameter 30 mm, length 54 mm	diameter 42 mm, length 72 mm
Read out unit	LEM 2020 or Scope	